



CONTROLLING THE INFORMATION FLOW



OPEN LINE

HIGH-END COMMUNICATION SERVER:

- > Secure, reliable desktop faxing
- > Email integration
- > Easy faxing from business applications
- > Highly scalable solution
- > Integrates with all network types – analog, digital and IP
- > Seamless MFP integration

GUARANTEED DOCUMENT SECURITY:

- > Approval of outbound faxes and emails
- > Intelligent routing
- > Archiving of all document types

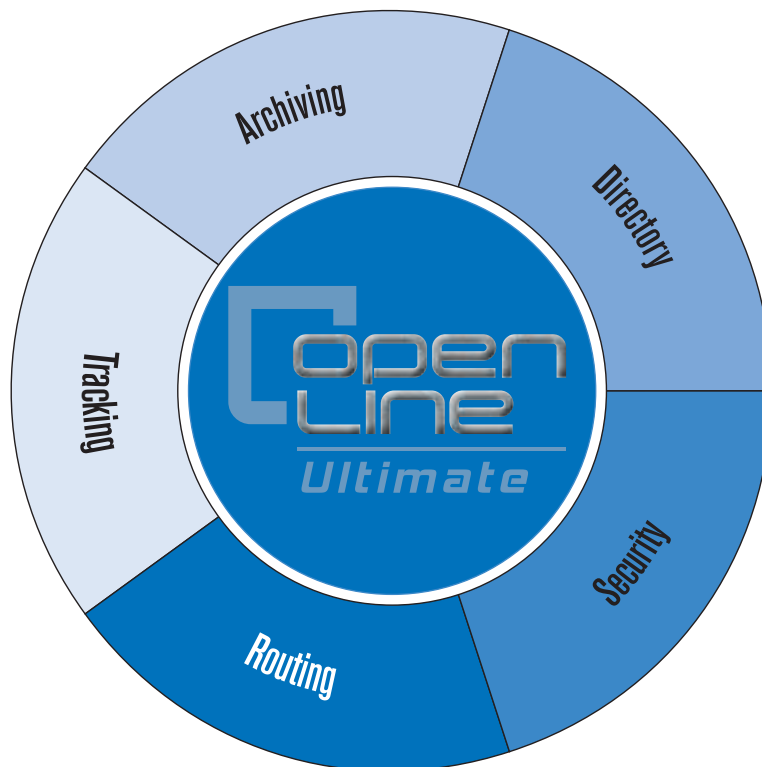
OPEN LINE

Designed to ensure an intelligent flow of information within your business environment, Open Line is a "plug & play" communications solution that caters to organizations seeking a comprehensive solution for faxing and archiving. As a leader in analog, digital and IP communication systems, SAGEM positions Open Line as an all-in-one, turnkey fax server appliance for effortless and secure fax communication, including routing, search and retrieval.



Secure & reliable data flow

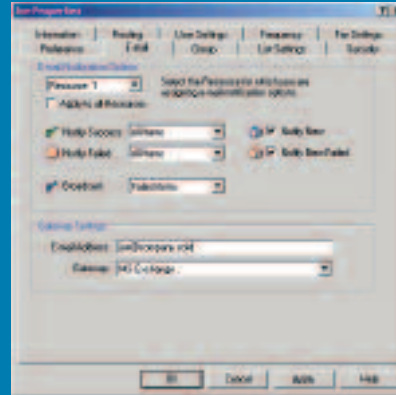
Open Line plugs easily into any network infrastructure (analog, digital or IP) to scan, index and automatically archive incoming and outgoing faxes and documents. The all-in-one solution accommodates up to: 8 analog lines, 8 IP network sessions, or 24 digital lines. Compatible with major VoIP gateways and IPBXs on the market** supporting the T.38 protocol, Open Line is a simple, secure and reliable solution for optimizing your information flow.



A COMMUNICATION SOLUTION...

Flexible fax management

Manage inbound/outbound faxes directly from your desktop. Easily configure your Open Line to forward faxes in automatic mode - DID (Direct Inward Dialing), semi-automatic mode or in manual mode.



Familiar, user-friendly interface

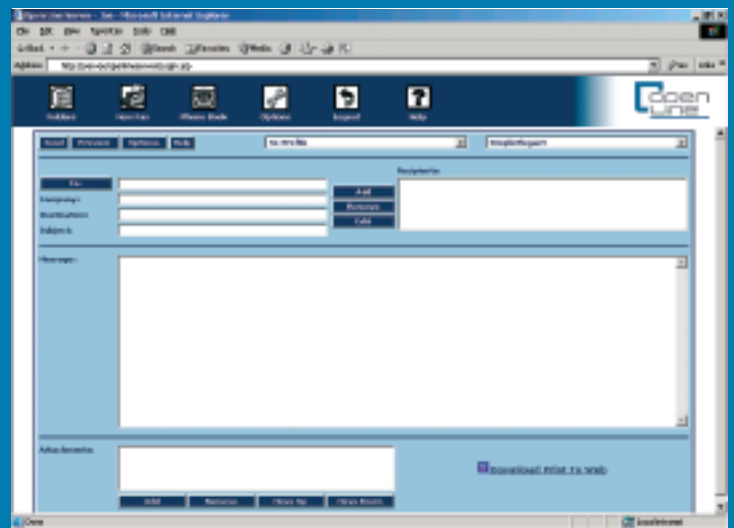
Open Line integrates with your current email system, providing a familiar and consolidated user interface environment to easily manage your fax flow. User-friendly icons flag the status of your documents as read, viewed, archived...

Fax client

To ease and simplify communication, Open Line enables users to manage their faxes directly from popular desktop and business applications, thanks to Autofax feature. This feature allows Open Line to automate most of the outbound faxing. Users can send and receive faxes directly from their email client.

SAGEM's SendFAX application is designed for easy, fast and efficient real-time faxing and fax flow tracking. Benefit from distinctive features such as automatic fax cover sheet insertion, fax previewing and printing.

Web client support further simplifies Open Line faxing, since there is no additional software to install on your desktop. The web client enables users to send and receive faxes from their desktop and basic Windows applications. It supports an unlimited number of users, and is the ideal solution for managing fax traffic as your organization evolves.



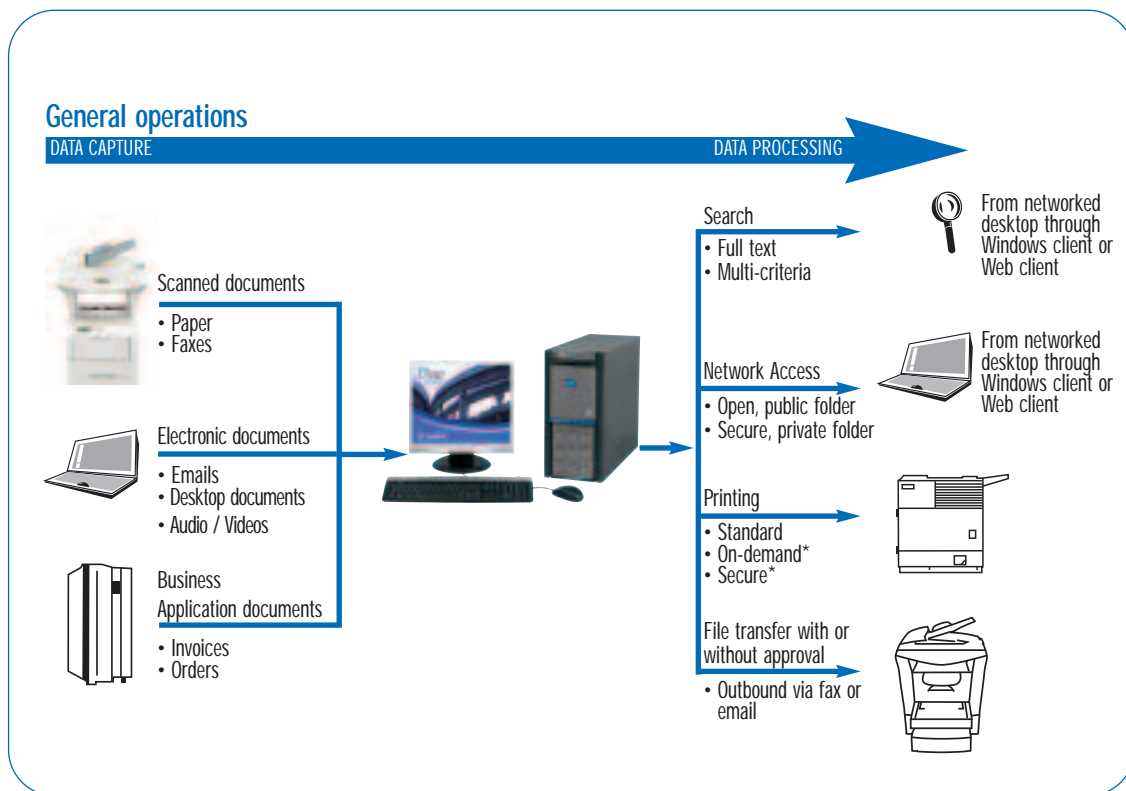
A TURNKEY SOLUTION...

Seamless integration with networked fax machines

Streamline and improve your current fax processes by connecting to all your MFPS. Consolidate and archive all faxed and scanned documents, and convert them into a PDF file for easy viewing, processing and printing.

A professional archiving solution

Archive up to a million documents (faxes, emails, desktop documents, business application files...). Track all inbound and outbound business data. With full-text and multi-criteria search capabilities, networked users can easily and quickly retrieve archived documents. Archived content is stored in either public or private folders, and is accessible per predefined user profiles and privileges. You will always be in full control of your projects and data flow.



...AND SECURE SOLUTION

Open Line manages and controls document follow-up and contents

Today managing information has become essential for companies.

With the Open Line solution, each inbound/outbound document is archived. Handle public documents efficiently (e.g. expense account forms, standard letters...) among your collaborators. Documents archived in Open Line can be printed on demand directly from an MFP, providing optimal control over printing costs.

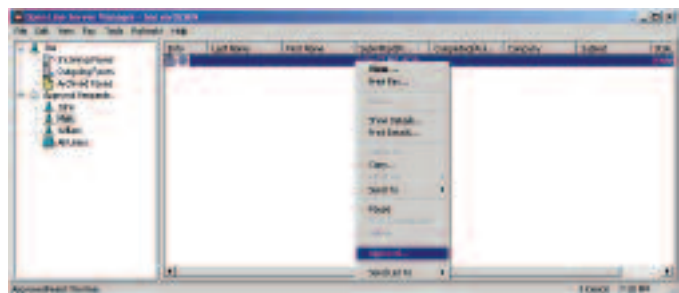
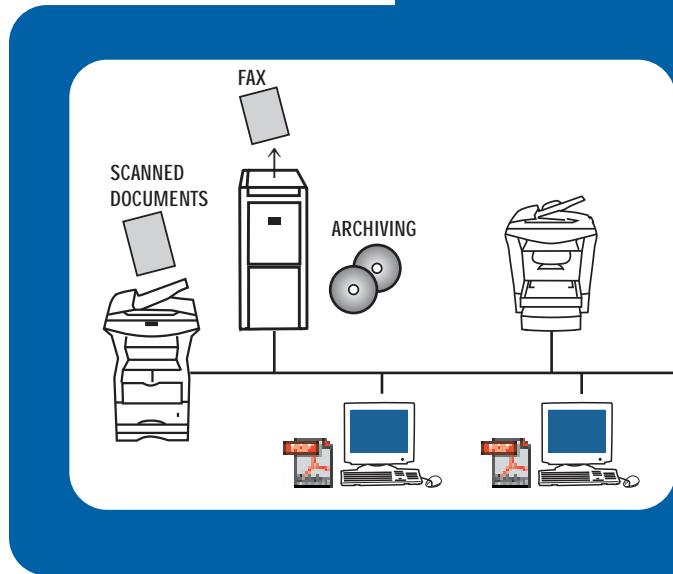
Users are able, according to their needs, to print stored documents on Open Line from multifunctions.

This ensures you an optimal control of your printing costs.

With secure printing, your confidential documents can only be sent to an MFP for printing once you complete authentication through a personal password.

Information control

Users have full control over information management from virtually any workstation. Outbound faxes are monitored to an assigned officer for validation and approval. Open Line's fax approval system ensures the integrity of all outgoing fax documents.



OPEN LINE - TECHNICAL SPECIFICATIONS

FAX SERVER

Configuration

- Central Processing Unit:
 - Windows 2000 Pro - Xeon 2,4 GHz Dual Core - 1 Gb RAM
 - Two 73 GB hard disks - 17" TFT screen monitor
 - DVD burner
- Network interface Ethernet 10/100/1000 base T
- Kaspersky antivirus software

Fax communications

- Intelligent Group 3 fax boards (6 sec./page)
 - Analog Boards (2 - 4 - 8 channels)
 - IP protocol (2 - 4 - 8 sessions) T.38, SIP & H.323
 - Digital Boards (24 channels)
- VoIP gateway compliant**: Cisco, 3Com, Avaya...
- IPBX compliant **: Alcatel-Lucent, Nortel

Communication services

- Configuration of outbound faxes according to profiles
- Outbound:
 - Programmable redials for busy or failed transmissions
 - Resolution: normal mode (200x100 dpi) or fine mode (200x200 dpi)
 - Prioritization of outbound faxes according to profile
 - Management of concurrent faxes sent to the same recipient
 - Centralized waiting queue management
 - Delayed transmission
- Inbound:
 - Manual or automatic routing of faxes per diverse criteria: Direct Inward Dialing (DID), Caller or Called Subscriber Identification (CSID)
 - Fax reception by a user, a "super user", a user group, a printer or a networked SAGEM fax machine

Archiving

- Automatic hard disk/network drive/DVD burner archiving of all fax traffic (electronic and paper), emails, office and business application documents
 - Full text or multi-criteria search: name, subject, fax number, date or unknown status
 - Number of users: 500 maximum

Email integration

- Desktop faxing directly from email clients
- Direct or manual fax routing to email inboxes
- Connector for Microsoft Exchange 5.5, 2000/2003, Exchange 2007 via SMTP
- SAP R3 connector
- Add-in for Lotus Notes from 4.6, 5.x, 6.x; Lotus Notes 7.x support via SMTP
- Connector for SMTP/POP3 (Netscape, Eudora, Sendmail, SLMail...)
- Conversion of file attachments

SAGEM CLIENT

- Unlimited number of users
- Fax approval system for outbound faxes
- Faxing from applications printable under Windows
- Sends concurrently to both fax and email recipients
- Accommodates attachment of multiple files within a single fax
- Sends complete or selected pages of a document
- Customized, email blasts from Microsoft Word
- Preview document prior to sending
- Public directory access, creation of private directories
- Preview and sort personal fax transmission records and waiting queue
- Fax display with image rotation, zoom, annotation (text, stamp, signature or image) and forwarding capabilities
- Fax cover sheet customization, programmable time, image resolution and transmission priority
- Inbound/outbound fax status notifications
- Fax transmission report can be viewed and printed (manually or automatically)
- Compatible operating systems: Windows 98/Me/NT4/2000/TSE/Citrix/XP/Vista

EMAIL CLIENT

- Unlimited number of users
- Send/receive faxes directly from email inboxes
- Supported email clients:
 - Microsoft Exchange without forms
 - Microsoft Outlook 97 without forms
 - Microsoft Outlook 98, 2000, 2002, 2003, 2007 with complete inbound/outbound fax forms (profile and fax cover sheet management, fax preview, fax transmission reports...)
 - Lotus Notes 4.5, 4.6 without forms
 - Lotus Notes 5.x, 6.x, 7.x with complete inbound/outbound fax forms (profile and fax cover sheet management, fax preview, fax transmission reports...)
 - SMTP/POP3 (Microsoft Outlook Express, Netscape Communicator, Eudora...)
- Utilizes existing email address books
- Sends concurrently to both fax and email recipients
- Inbound/outbound fax status notifications
- Fax transmission report can be viewed and printed manually or automatically

WEB CLIENT

- Unlimited number of users.
- Send and receive faxes through a Web client
- Supported Web clients: Internet Explorer, Netscape, Mozilla Firefox
- Inbound/outbound fax management: profile, fax cover sheet, preview, transmission reports...
- Sends concurrently to both fax and email recipients
- Inbound/outbound fax status notifications
- Fax transmission report can be viewed and printed manually or automatically

MANAGEMENT

- 3 levels of access privileges: administrator, "super user", and user
- Remote administration
- Programmable Least Cost Routing (LCR)
- Programmable setup for outbound/inbound channels
- Import of existing directories or links
- User management:
 - Create/modify/delete: users, "super users" and user groups
 - Create routing table
 - Create user profile: assignment of resources, fax cover sheet, fax ID, number of redial attempts, priority allocations
- Definition of archiving and printing rules
- Exportable fax transmission reports for analyzing fax traffic, load, billing codes and other statistics
- Microsoft Exchange mailbox retrieval
- Retrieval of Lotus Notes user directory (LDAP)
- Retrieval of NT/LDAP user accounts
- Administration via Lotus Notes and Microsoft Exchange possible
- Remote maintenance via modem

PRINTERS

- All types of network-ready** printers on the market
- Possibility of connecting multiple printers on the LAN

SAGEM MFPs

- Connect to your local area network, offers the same benefits as SAGEM's LAN-ready MFPs
- Archive fax traffic and scanned documents
- Secure printing with password*
- On-demand printing*
- Benefit from the same ergonomics and habits of traditional faxing
 - Send faxes and emails via the intranet
 - Transmission report with a thumbnail view of the first page
 - Directory
 - Receive and print faxes and emails
- Automatic analog phone line back-up in the event of network downtime
- Optimization of communication resources (channels, wait queues...) for maximum performance
- Remote monitoring

*only with SAGEM 5890 bdn & 6890 dn
**Subject to validation by SAGEM



NO-STRESS OFFICE
BY SAGEM*

Dealer stamp

North America SAGEM-INTERSTAR INC.

455 Fenelon Blvd., Suite 112
Montreal (Dorval), Quebec, CANADA H9S 5T8
Toll-free US/Canada: +1-888-766-1668 or
Tel: +1-514-631-1668 - Fax: +1-514-633-1439

www.faxserver.com

Europe, Asia, Middle East & Africa (EMEA) Sales SAGEM COMMUNICATIONS (SAFRAN GROUP) Printing Terminals Business Unit

Le Ponant de Paris
27, rue Leblanc - 75015 Paris, FRANCE
Tel: +33 1 58 11 77 00 - Fax: +33 1 58 11 77 77

SAGEM COMMUNICATIONS (SAFRAN GROUP) Printing Terminals Business Unit

Headquarters: Le Ponant de Paris
27, rue Leblanc - 75015 Paris, FRANCE
Tel: +33 1 58 11 77 00 - Fax: +33 1 58 11 77 77

www.sagem.com



All rights reserved. The information and specifications included are subject to change without prior notice. Sagem Communications tries to ensure that all information in this document is correct, but does not accept liability for error or omission. Non contractual document. All trademarks are registered by their respective owners. Limited company - Capital 161 038 815 Euro - 440 294 510 RCS Paris - SAGEM is a registered brand from Safran Group - 12/2007